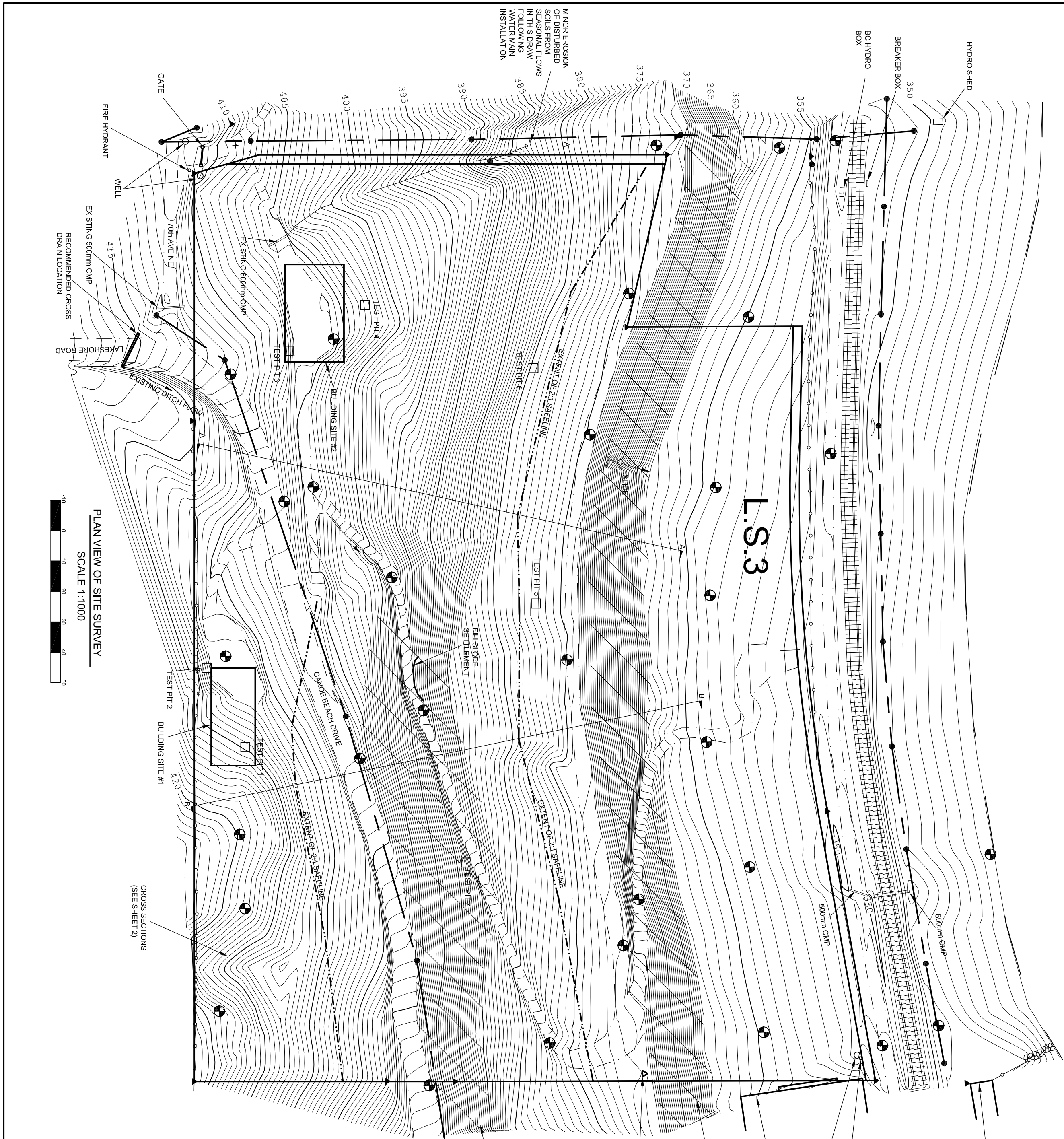


SHUSWAP LAKE

CAPTAINS COVE MARINA



PREPARED FOR: BRETT WISEMAN		PREPARED BY: FOR SITE Engineering & Geoscience Ltd.	
FIGURE 1 TOPOGRAPHIC SURVEY OF LOT L.S.3 AT THE CORNER OF CANOE BEACH DRIVE AND LAKESHORE ROAD N.E. SALMON ARM, BC.			
DWG No: 977-2-WISEMAN TOPO-001		SHEET: 1 OF 2	
DRAWN BY: BRETT BARNARD, F.I.T. DESIGN DATE: JUNE 23, 2009 REVIEWED BY: MICHAEL FOSTER, P. Eng. SITE SURVEY BY: FOR SITE ENGINEERING & GEOSCIENCE LTD. SITE SURVEY DATE: MAY 4 TO 7, 2009 FILE NAME: WISEMAN TOPO.DWG SCALE: AS NOTED REVISION NUMBER: REVISION DATE: ALL MEASUREMENTS IN m UNLESS OTHERWISE NOTED.		SEAL OF B.C. P. ENG.	
SURVEY HUB PRESENT WATER LEVEL FENCE LINE IP 0.5m CONTOURS PAVED ROAD EDGE TEST PIT	POWER POLE RAILROAD TRACKS EXISTING ROAD EDGE POWER LINE LEGAL PROPERTY LINE 2:1 SAFELINE WATER FLOW		